

WALTON ARTS CENTER:  
EXCITING PERFORMANCES,  
VOICEJAM FESTIVAL

INTERSECTION:  
TRANSPLANTS  
AND NATIVES

JOE MARTIN STAGE RACE:  
GEARING UP FOR 40TH  
ANNIVERSARY EVENT

# CitiScapes

PEOPLE • PLACES • EVENTS FOOD • FUN

## HOME & GARDEN DESIGN TRENDS FOR 2017

Fresh, New Home Décor Inspiration

Makeover Spaces:

Trendy Kitchen Transformations

Living Spaces: Big Life, Tiny House

The Best Décor for Outdoors

MARCH 2017  
\$2.50 VALUE

**PROFILE:** Russell Hill, Washington County Assessor

**FASHION:** Spring Fashion Preview

**EATS & DRINKS:** Magpie Bridge Apothecary Café in Rogers

also



# BIG LIFE, TINY HOUSE



# DESIGNED FOR GOOD TIMES, THIS FAYETTEVILLE TINY HOME IS BIG ON FUNCTION AND STYLE

On March 4, a tiny house in South Fayetteville will be making its debut on national television.

*Tiny House Nation* features the design and construction of homes no larger than 500 square feet, and the individuals and families who want to live in them. There's a common theme that runs throughout the show: the desire to live simply.

For Asha Mevlana, it was a life-changing event that led her to that goal. "When I was 24, I was diagnosed with breast cancer, and it literally changed my perspective overnight. I started to value experiences over material things," she explains.

After watching all of the *Tiny House Nation* episodes, Asha realized that she loved the option of traveling with a home and avoiding the mortgage commitment that usually accompanies larger houses. She put together a video essay (Asha is a film school graduate, and also holds other degrees), submitted it to the show, and was notified in July 2016 that she had been selected and indeed was on the road to building her dream tiny home.

There was only one issue – she lived in New York City.

After her brother and sister-in-law moved to Fayetteville several years ago, Asha began making frequent trips to visit them and her two nephews. And, like so many of us, the area started to grow on her. "There was such a sense of community.

Choose  
Hunter Douglas  
shades today.

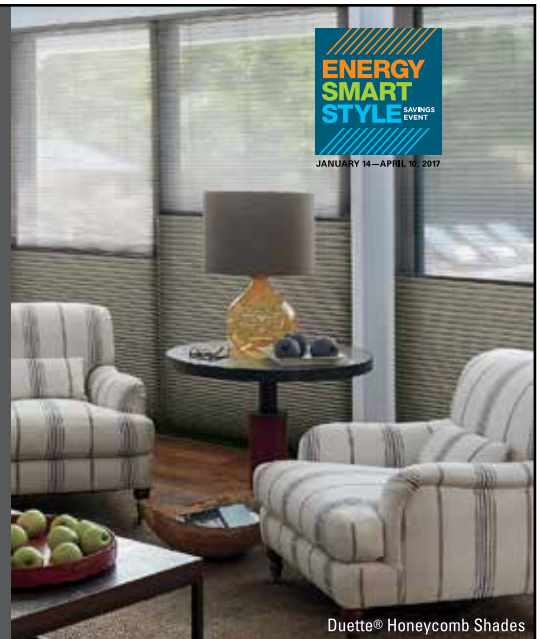
Save energy  
year-round.

Keep your home warmer in winter and cooler in summer with select, insulating Hunter Douglas shades. They're the smart and beautiful way to help lower your energy bills.

**\$100  
REBATE\***

ON QUALIFYING PURCHASES OF  
HUNTER DOUGLAS WINDOW FASHIONS

HunterDouglas 



Duette® Honeycomb Shades



HunterDouglas  Gallery®

20 E. Township, Fayetteville • 479.695.1770

[www.greenvallywindow.com](http://www.greenvallywindow.com)

Hours 9am-5:30pm M-F By Appt on Saturdays and evenings  
Workroom Services - Draperies - Drapery Hardware - Fabrics - Upholstery

\*Manufacturer's mail-in rebate offer valid for qualifying purchases made 1/14/17-4/10/17 from participating dealers in the U.S. only. For certain rebate-eligible products, the purchase of multiple units of such product is required to receive a rebate. Rebate will be issued in the form of a prepaid reward card and mailed within 6 weeks of rebate claim receipt. Funds do not expire. Subject to applicable law, a \$2.00 monthly fee will be assessed against card balance 6 months after card issuance and each month thereafter. Additional limitations may apply. Ask participating dealer for details and rebate form. ©2016 Hunter Douglas. All rights reserved. All trademarks used herein are the property of Hunter Douglas or their respective owners. 1701MAGW02





## Bank On The Go!

*Convenient access to your  
accounts anytime, anywhere!*

- FREE Online Banking & Bill Pay
- FREE Mobile & Text Banking
- FREE Signature Bank MasterCard™ Debit Card
- FREE Xpress Deposit (mobile check deposit)
- ATM Fees Refunded Nationwide



BENTONVILLE | SPRINGDALE | FAYETTEVILLE | MEMBER FDIC [www.sbofa.com](http://www.sbofa.com)    







It seemed like a small area where people actually get to know and care about each other," she says. "I thought about my apartment building in New York City, where there are probably 200 units, and how I only knew one person down the hall from me. And every time I would visit Fayetteville, it always seemed so lively, there always seemed to be so much going on. So when they asked where I wanted to build, my answer was – Fayetteville!"

One of the first of its kind in Northwest Arkansas, the L-shaped tiny home located on the corner of S. Willow Avenue and E. 7th Street is hard to miss – particularly because of the expansive deck on the front of the house. Asha was intent on including it, considering her musical profession as violinist with the Trans-Siberian Orchestra (she tours nationally with the group for two months each year during November and December). "The deck was really important to me. Part of the reason I built on that corner piece of land was because it seemed like a great place to have concerts and little get-togethers, where people can walk by and further that sense of community. I could've put it on the back of the house for more privacy, but chose the front so it felt more welcoming."



The

# PALISADES

AT PLEASANT CROSSING

WELCOME HOME

palisadesrogers.com

479.246.0746

EXIT 81



**BlueRibbonLawns**  
Inc.  
Lawn, Shrub & Tree Solutions

Call us today for a free quote!

**479-636-1717**

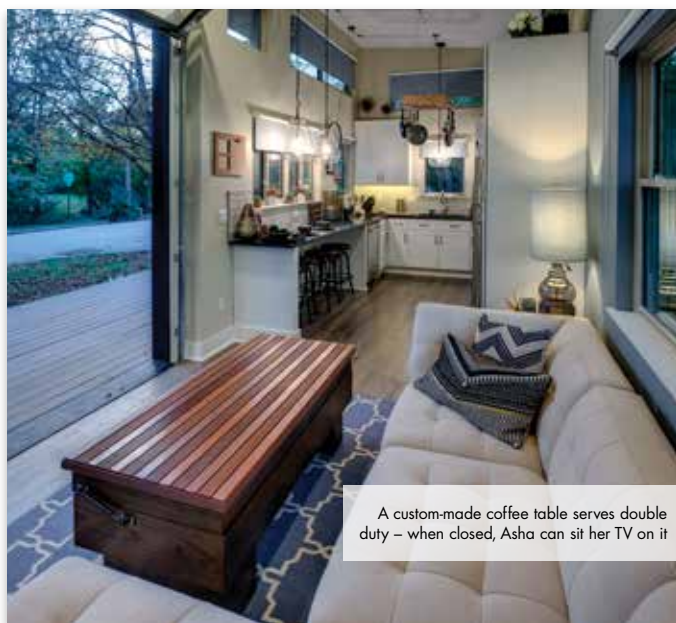
*Arkansas' finest full service lawn care and landscape company since 1989.*



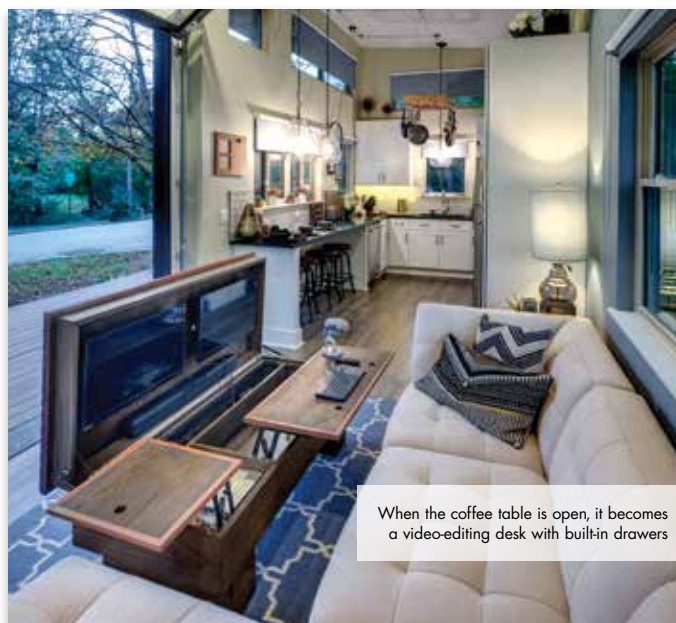
In fact, folk band *National Park Radio* has already broken in the deck with live music, along with Asha, who enjoyed a short jam session with the group. If you missed it, don't worry – there are plenty more in the works. "My ultimate goal is to have something similar to NPR's *Tiny Desk Concerts*, instead called *Tiny Deck Concerts*, where we can all enjoy live, free, laid-back music on the front porch."

The music theme carries on past the deck, where it's impossible to miss the life-size, 120-square-foot, functioning amplifier (the volume goes up to 11, like *Spinal Tap*, Asha says), and gives the home its L shape. The speakers that face the deck are boat speakers, which can withstand rainy conditions, and any instrument plugged in will dole out some pretty great sound. This part of the house was constructed on a trailer (the main portion is on a foundation) and built to sound-recording specifications, so Asha can have the freedom to travel with it and also record in a quality environment. (Fun fact: The soundproof insulation is made from recycled denim jeans). The walls are lined with various acoustic instruments, a seven-string custom-made electric violin, LED violin and TSO albums.

As for the main portion of the house, which occupies 400 square feet, Asha's top priorities were allowing in as much light as possible, and high ceilings to make up for the lack of space. The entrance to the house features a frosted glass garage door, and the coffee table where the television sits folds up to serve as a video-editing desk with built-in drawers. The spokes and gears from a broken bike found in the dumpster on site were repurposed to create a pulley system for pots and pans in the kitchen.



A custom-made coffee table serves double duty – when closed, Asha can sit her TV on it



When the coffee table is open, it becomes a video-editing desk with built-in drawers



# Seaside

## POOLS & SPAS

BENTONVILLE, AR

1301 S.E. Walton Blvd • (479) 271-9933

SPRINGDALE, AR

4686 N. Thompson • (479) 756-6543

[www.seasidepools.com](http://www.seasidepools.com)

- New Pool Construction (gunite & vinyl)
- Pool Remodels
- Maintenance and Repairs
- Spa sales
- Retail locations with chemicals, toys, etc.



**CitiScapes**  
MAGAZINE

**BEST OF**  
NORTHWEST ARKANSAS  
**2016**  
**WINNER**

**Thank you for voting us  
Best Pool & Spa Company  
again this year!**

**CitiScapes**  
MAGAZINE  
**BEST OF**  
**2016**  
**WINNER**



GODDARD DESIGN GROUP

DESIGN & DEVELOPMENT

[www.goddarddesigngroup.com](http://www.goddarddesigngroup.com)

3945 N Vantage, Suite 2

Fayetteville, Arkansas 72703

479.521.2592

# Nurture

The Bank of Fayetteville is celebrating its 30 year anniversary by honoring non-profits serving our community needs.

**Apple Seeds** develops and implements garden-based programs that educate and excite children about the wonders of nature and benefits of healthy eating.

**We call that Nurturing....  
The students call it Sweet!**

THE BANK OF  
FAYETTEVILLE



**30**  
YEARS



photo: Nikki Toth

MeBanking.com

479.444.4444

Member  
FDIC

[appleseedsnwa.org](http://appleseedsnwa.org)

As per city rules, no stairs are allowed in tiny homes, so alternating treads were used to reach the loft area for sleeping.

Asha describes the construction as a “crazy intense, fast process.” The project lasted five weeks from ground-breaking to completion. 3Volve Housing, owned by Asha’s brother and sister-in-law Z and Gina Neiderman, was integral in moving it along. 3Volve is a local development company that has concentrated its efforts on building and renovating houses — with a focus in South Fayetteville — where it is possible to create a more walkable neighborhood.

Vickery Construction, owned by Stefan Vickery, relocated from Little Rock for the duration of the project. “Stefan and his crew were the men behind the house, and worked tirelessly on an insanely short timeline,” she said. Stefan is also part of the family – the brother of Gina, Asha’s sister-in-law.

In addition, “The City of Fayetteville was so gracious and helpful in getting this project pushed through,” she says. ■

*“Amplified Tiny House” will air on Tiny House Nation on March 4 at 8 p.m. on the FYI network.*



**CONTRACTOR:** Z NIEDERMAN, 3VOLVE HOUSING CO., FAYETTEVILLE • **BUILDER:** STEFEN VICKERY, VICKERY CONSTRUCTION, LITTLE ROCK • **APPLIANCES:** METRO APPLIANCES & MORE, SPRINGDALE  
**• CUSTOM OUTDOOR SIGN:** OLIVIA TRIMBLE, SLEET CITY SIGNWRITING, FAYETTEVILLE • **DECK FURNITURE:** ECOVET FURNITURE, ROGERS • **DESIGN ASSISTANCE AND FURNISHINGS:** HOWSE, BENTONVILLE • **EXCAVATION:** TIDEY EXCAVATION, ROGERS • **FAUCETS:** LOCKE SUPPLY CO., VARIOUS LOCATIONS ACROSS NWA • **GUITAR DISPLAY HOOKS:** GUITAR CENTER, FAYETTEVILLE  
**• INTERIOR PAINT:** SHERWIN-WILLIAMS, VARIOUS LOCATIONS ACROSS NWA • **SHEET METAL FABRICATION:** KEN SCHOB, FAYETTEVILLE • **SUPPLY STORAGE DURING BUILD:** HOGBOX, FAYETTEVILLE • **TILE (BATHROOM):** TOWNZEN TILE & LAMINATES, SPRINGDALE

HOME PROS USED